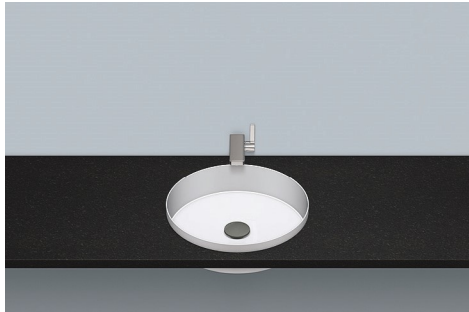


A³form

Technical data sheet



Built-in basins

EB.KE400

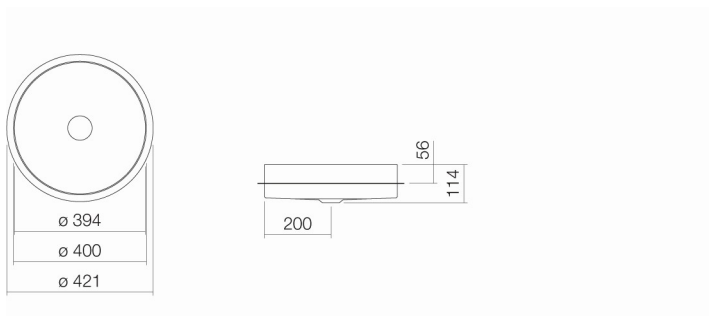
Article number: 2025503000

Design partner: sieger design



Features

Description	EB.KE400
Article number	2025503000
Standard colour	White
Construction	without tap hole, without overflow
Dimensions	ø 400 x 114mm
Material	Glazed steel
Net weight	5,9 kg
Installation	for installation from below
Accessoires	Bottle trap SI.2, Bottle trap SI.3
Tap fitting information	Optimum point of impact approx. 115 – 160mm from rear edge of basin.
Tap fittings with a vertical outlet and aerator provide the optimum flow of water onto the surface below (angle of impact: 90°).	



Text for invitation to tender

Built-in basin, round, ø 400mm, height 114mm, of which 25mm extending above the counter top, glazed inside and outside, white, optimised for installation in 30mm counter tops, without tap hole and overflow, including drain valve with chrome-plated cap

Brand: Alape

Model: EB.KE400